

# St. Paul's Herald

## From South Bass Island



### January, February & March 2011

#### INSIDE THIS ISSUE:

Vestry Seconds	2
Thankfulness & Praise	2
Steeple Renovations	2
Youth	3
Episcopospeak (weathervanes)	3
Annual Meeting	5
Calendar	5 & 7
Diocesan News	5
Vestry and Officers	5
Ash Wednesday & Lent	6
Columbarium Update	6
Annual Report Summary	8-10
View from the Merry Mobile	11
2 Cents a Meal	Back Page

### Our Community of Faith

St. Paul's is a busy place, even in the winter! Our community of faith stays connected in many ways throughout the year. The newsletter is one key component. Since we do not publish monthly, please put this copy where you can refer to it all the way through March.

This three-month edition of St. Paul's Herald, was intentionally timed for mailing after our Annual Meeting held on January 16<sup>th</sup>, the date specified by the Diocese of Ohio Canons. We want to offer the information shared at our Annual Meeting with everyone connected to St. Paul's. The intention was to provide most reports about parish life in 2010 in written form so we could be good stewards of our time. The verbal reports were related to the actions which required a vote by our members. You will find a summary page inside this newsletter. Copies of the full Annual Meeting report are available in the parish office. Please come by and pick one up. Due to postage rates and the size of the report, we will not be sending the full report with this newsletter.

This newsletter covers a longer period than other newsletters but we are still very active. If you have not used the phrase, "timing is everything" you probably have heard it. There is a great deal of truth in that statement. The difference between a good joke and a bad one is a person's sense of timing. For photographers, getting the perfect lighting in a photo depends on timing; and every cook knows, timing can be the difference between a succulent dinner and a disappointing meal.

Timing is also essential when communicating information in a parish. If we announce the time of the Easter service now, people might forget. If we wait until the last minute

Continued on page 7

### Highlights January, February, and March

Items marked with a ✕ are described inside this edition.

#### Special points of interest:

- Ash Wednesday
- Lent
- Buildings & Grounds
- Summer Plans

#### February

Faith Discussion every Sunday at 4pm ✕

Feb 11-12 – Diocesan Winter Convocation @ Perrysburg. All are invited to attend. Details in the parish office and the bulletin board.

#### March

✕ Ash Wednesday (March 9<sup>th</sup>) Services 8am, and Noon

Young persons' Ash Wed Service at 3:30 pm

Lent Program: "Remember Your Baptism" will be at 4pm on Sundays ✕

#### Daylight Savings time!

**Sunday, March 13, 2011** at 2:00AM turn your clocks forward 1 hour to **3:00AM**

**Mar 20<sup>th</sup>** – Bible Buddies present the lift of St Patrick as the sermon.

✕ **See the Long Term Calendar on page 7**

## Vestry "Seconds" (abbreviated from the Vestry Minutes)

All meetings are open to everyone. The complete vestry minutes are posted in the church office.

Erin Urge narrates the Epiphany Pageant



### The vestry met on November 17th 2010.

#### Business Completed

The vestry discussed the proposed bylaws

### The vestry met on December xx 2010.

#### Business Completed

Although the vestry traditionally has not done much business at the December Pot-Luck, this year we discussed several business items including the

Annual Meeting, steeple repairs and the 2011 budget.

Articles about these topics are in this newsletter and are not detailed here.

### The vestry met in early January to review the proposed 2011 budget.

#### Business Completed

The vestry agreed to present the deficit budget at the annual meeting for approval.

### The vestry met on January 24th to elect officers and make plans for 2011.

#### Elected parish officers:

Mary Ann Meyers – Sr Warden  
 Judy Ruggiero – Jr Warden  
 Mella Davies - Clerk  
 Mary Ann Meyers – 2<sup>nd</sup> NCMAC Rep  
 Dana Blumensaadt – Treasurer.

The next Vestry Meeting is planned for March 13th at 7pm.

## Songs of Thankfulness and Praise...

*"Songs of Thankfulness and Praise...."*

Thanks to all our parishioners who volunteer to assist in our worship services as readers, intercessors, acolytes and Eucharistic

We had many people helping around the church over the holidays.

Thanks to our "Kitchen Guild" for keeping our gathering area spruced up with seasonal colors. We appreciate the Altar Guild, their friends and families who prepared the worship space with greens and the Advent wreath that demanded a lot of attention this year!

Sue Amrine and Pinky Batt braved the freezing temperatures to set up and oversee the outdoor crèche which

included the wise men processing over hill and dale to reach the manger on Epiphany.

Todd Blumensaadt plows out both church driveways and walks. (Last fall he donated the use of his lift for our steeple repair so tell him THANKS when you see him). Thanks to all others who have shoveled and salted.

Thank You Coffee Hour Friends in November, December, and January. We are looking for a few more people to sign up in February and March.

## Steeple Renovations Nearly Completed

The steeple has been repaired and from a distance the new covering reflects the sunlight making us stand out even more than before. With the early onset of cold, snow and ice, Rob LaPlante braved the chilling wind as he finished up the top portion.

The top of the steeple is capped for the winter so the new finial and weathervane can be put into place in the spring.



Talii Steidl portrays King Herod Epiphany Pageant

## Focus On Our Young Christians

- ❖ **Communion Preparation:** In the Episcopal tradition, anyone of any age who is baptized (in any faith tradition) is welcome at the rail. See Mo. Mary for materials to help your children learn about Eucharist.
- ❖ **Church School:** Our Church School continues to be an exciting place with 6-10 children arriving each Sunday Morning.
- ❖ **Bible Buddies!** Tuesdays 3:15pm – 4:10pm. Each week we gather for prayer, a bible lesson, snacks, and other activities which may include crafts, singing and games. No fees required but children must be registered.

## Daisy Girl Scouts

- ❖ The Daisy (youngest age level) Girl Scouts will meet at St. Paul's every other Monday afternoon after school starting in February. Their meetings will continue through the spring.
- ❖ This is another form of hospitality and community outreach St. Paul's is known for.
- ❖ The leaders of this troop of eight young ladies from the Put-in-Bay community are Suzanne Kostura and Susan Cooks.

## Epis-Co-Speak

### Question: Why are there weathervanes on churches?

St. Paul's steeple has had a weathervane as long as we can remember. If you look at other churches built before the 1950's most of them have weathervanes also. They date back centuries, or even millennia.

Early histories tell us Andronicus, an astronomer, built history's first recorded weathervane for the Tower of the Winds in Athens about 48BC. In addition to the weathervanes that still exist, bronze weather vanes have been found by archaeologists. Weather vanes were used in Britain, Normandy and Germany to show archers the direction of the wind.

A tapestry from 1065 (the Bayeux Tapestry) shows a weathercock vane being placed on Westminster Abbey in England. Many weather vanes are in the form of roosters. The oldest weathervane still existing in Britain is believed to be at Ottery St. Mary, Devon, and dates to about 1340. It has whistling tubes so that the cock decoration makes a crowing sound.

When the people looked up to the steeple to check the wind, they would also be reminded of the Christian symbolism of the rooster crowing.

Legend says Pope Nicholas I who led the church in the 9<sup>th</sup> Century (before we had different denominations) decreed that a cockerel (a rooster) would be displayed from every church steeple as a weather vane. He decreed that every church should show a cock on its dome or steeple, as a reminder of Jesus' prophecy that the cock would not crow the morning after the Last Supper, until the disciple Peter had denounced Him three times (Luke 22:34).

The weathervane is also a reminder of how easily faith could be swayed, like a weathervane in the wind.

St. Paul's weathervane pointed the way for islanders for many years. There was a time when grapes covered most of the island and the steeple was much more visible than it is today. As the steeple was repaired in 2010, it was clear the rotting wood at the top could no longer support our weathervane which was worn out from years of service.

**Melinda Myers is coordinating the work to select the new weathervane for St. Paul's.** Please contact her if you have thoughts, memories or good pictures of the original weather vane.

### *ST. PAUL'S CONVERSION*

The church calendar observed the conversion of St. Paul on January 25<sup>th</sup>. We celebrated this feast day at Morning Prayer. In the summer we will celebrate the Feast Day shared by Saints Peter and Paul.

### *ASH WEDNESDAY – MARCH 9<sup>TH</sup>*

Imposition of Ashes  
8am and Noon with Eucharist  
Children's service – 3:30pm

**From the Parish Register 2010:** All churches have some method of recording the official acts that occur each year. St. Paul's records the information in our register and sends it to the Diocese at the close of each year in the Parochial Report. In the future, We will share this information in each newsletter.

For the 12 months ending Dec 31<sup>st</sup> 2010

Baptisms – 2  
 Marriages - None  
 Transfers in - 6  
 Transfers out - None  
 Members Deceased – 1 (Mary Ann Market)

Active Members recorded: estimated 48  
 Active Members recorded: estimated 200  
 See article in the April 2011 Newsletter for details.

Throughout the fall we worked on reviewing the parish records and creating a good list of addresses. We hope to finish this project by spring. Please continue to provide us with mailing address updates!

**From the Parish Register** – Recorded  
 January 1-31<sup>st</sup> 2011.

Births - none  
 Baptisms – none  
 Marriages - none  
 Transfers in - none  
 Transfers out - none  
 Members Deceased - none

We pray for those who have died, and for those who mourn Mary Carr, a member of Mother of Sorrows, who died Dec. 25<sup>th</sup>, 2010 and Bud Toole, resident of South Bass and a friend of St. Paul's who died Jan 29<sup>th</sup>.

Bud Toole's funeral will take place at St. Paul's on April 18<sup>th</sup>.

“May their souls and the souls of all the departed rest in peace”

### 40 Days of Lent

If you count the days between Ash Wednesday and Easter you see there are more than 40. The Sundays of Lent are not included in the 40 days and some people relax their Lenten observance on Sundays.

On Sunday March 20<sup>th</sup> the Bible Buddies will help us relax by giving us a presentation on the life of St Patrick.

**Newsletter:** Although many churches have stopped sending out a newsletter to save the postage and be environmentally conscious, our newsletter will continue to arrive on your doorstep unless you tell us to stop sending it.

If you prefer to read it online, please e-mail the Office at [St.Paulspib@cros.net](mailto:St.Paulspib@cros.net) to be removed from the newsletter mailing list. You can still receive all the other mailings.



### WEB SITE – <http://stpaulpib.com/>

Web site is still expanding. Do you have something to add?

Our Newsletter, *St. Paul's Herald*, is available on our website.

If you have anything to put in the May newsletter please send it (preferably by e-mail to [stpaulspib@cros.net](mailto:stpaulspib@cros.net)) by April 18th.

### WINTER OFFICE HOURS

Normal office hours remain the same in the winter with the exceptions noted below

Monday: Closed ✕ Tuesday 8:30am – 12:00 and 1:00-3:15pm ✕

Wednesday 8:30am – 12:00 and 1:00-3:30pm ✕ Thursday 1:00-3:30pm ✕

Friday 8:30am – 12:00 ✕ Saturday by appointment

No office hours on the following dates

Feb 10-12<sup>th</sup> due to Diocesan Winter convocation

Please call or e-mail the parish office if you go to the hospital. Messages will be checked regularly.



**St. Paul's Annual Meeting Summary**

Celebrate and Vision Together  
Jan 16<sup>th</sup> 2011

This year our annual meeting took place in the sanctuary following the church service on Jan 16<sup>th</sup>. The complete minutes of the meeting and copies of the annual report are available in the church office for those who were unable to attend. At the meeting the congregation took the following actions:

- 1) Passed revised by-laws. The revisions were needed to meet the revised requirements of the Episcopal Church and the Diocese of Ohio's Canon.
- 2) Elected Jeanne Burgess and Judy Ruggiero to three year vestry terms (2011 - 2013).

- 3) Elected Mella Davies as NCMAC Council Representative leaving a second position open.
- 4) Received the reports of the parish with thanks to the many people who support and care for this congregation.
- 5) After discussion, passed a significant deficit budget which will require use of reserve funds since the budget is not covered by pledges and anticipated offerings. We do not try to guess what we may receive from summer visitors but historically it has been enough to offset a portion of the deficit.

See the **Summary of the Annual Report on Pages 8-11**. The large size of the full report makes it expensive to mail and difficult to e-mail so please pick up a copy in the office when you are on the island. If that is not possible and you need a full report, call the office to ask for a mailed copy.

**Calendar**

*Copies of the master office calendar with additional details are available for pick-up in the office. Please call if you would like one mailed to you.*

- Mar 9<sup>th</sup> - Ash Wednesday
- Mar 18<sup>th</sup> - Deadline for Jan - April-May 2011 Newsletter
- Apr-Oct - see articles in this newsletter about Lent, Easter and Summer activities
- Oct 2<sup>nd</sup> 2011 - Bishop's visitation to St. Paul's

**Diocesan & Episcopal Church News**

**Bishop Mark Hollingsworth**, our Diocesan Bishop, will visit St. Paul's on Sunday October 2<sup>nd</sup>, 2011.

St. Paul's is part of the **North Central Area Mission Area** which meets four times each year. The 2011 meetings will take place on Saturdays 10-12am Mar 26th, May 21st, Aug 27th, and Nov 5th. They

are open to everyone. Our NCMAC representatives attend and share information with members of St. Paul's.

**The next Diocesan Council** meeting will take place November 12-13<sup>th</sup> 2011 in Toledo.

**St. Paul's Vestry and Officers**

- Mary Ann Meyers - Senior Warden '12
- Judy Ruggiero - Junior Warden '14
- Jeanne Burgess '14
- Jack Zimmerman '12
- Clark Davies '13
- Melinda Myers '13
- Doraine Toms '13
- Dana Blumensaadt, Treasurer
- Mella Davies, Clerk/Registrar

**Mission Statement:**  
*To welcome all people and encouraging Christian growth, to proclaim the Gospel by word and deed.*

The Rt. Rev Mark Hollingsworth Jr, Bishop, Diocese of Ohio  
The Rev Mary L. Staley, Priest-in-Charge

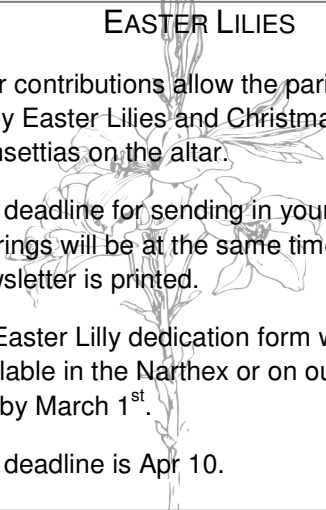
**EASTER LILIES**

Your contributions allow the parish to enjoy Easter Lilies and Christmas Poinsettias on the altar.

The deadline for sending in your flower offerings will be at the same time the next Newsletter is printed.

An Easter Lilly dedication form will be available in the Narthex or on our Web site by March 1<sup>st</sup>.

The deadline is Apr 10.



### From Our Mail Box

- ❖ We received many Christmas cards and letters which we all enjoyed.
- ❖ Each month we receive newsletters from nearby churches, the diocese and other Episcopal organizations. Come by the office to read them.

### The Narthex "Bulletin Board" in a Binder

- ❖ We receive so many notices and fliers in the mail they would cover a wall! Due to our limited space, items of interest will be placed in the notebook in the narthex.

## Columbarium/Memorial Garden

As St. Paul's comes closer to establishing a site for internment of ashes, we are learning there are several steps we need to take. Our Junior Warden, Judy Ruggiero is planning to meet with several people to discuss the details of location and design. We will also need to become established as a burial site within the requirements of the State of Ohio.

All of our vestry members are reviewing examples of the written materials we will need to develop as well as the requirements for establishing a board to oversee the site.

No decisions have been made yet. Although there are many good ideas among our members, we have not completed the preliminary work yet.

If you are interested in working with Judy and other parishioners to create the documentation and do some research, please contact her. This group will develop materials that will be given to the vestry for their approval later this year.



### Labyrinth

The labyrinth site is waiting under a blanket of snow. Work will continue in the spring.

### Palm Collection

Do you have palm fronds or palm crosses blessed last year or before? Traditionally the church gathers the palms from past years and burns them, creating the ashes that are used on Ash Wednesday. If you would like to contribute your palm fronds, please place them in the basket in the undercroft after Feb 20<sup>th</sup>.



## Ash Wednesday

### March 9<sup>th</sup> 2011

*Almighty God, you have created us out of the dust of the earth: Grant that these ashes may be to us a sign of our mortality and penitence, that we may remember that it is only by your gracious gift that we are given everlasting life; through Jesus Christ our Lord. (BCP, p. 265)*

At St. Paul's we will observe Ash Wednesday with a choice of services throughout the day: 8am, noon and 3:30pm. Holy Eucharist with imposition of ashes will be offered at the 8am and Noon services on Ash Wednesday.

The 3:30pm afternoon service for imposition of ashes will be a service that is understandable to our Bible Buddies (although the liturgy will not be "watered down"). There will not be Eucharist at this service.

## Lent

Lent invites us to slow down and reflect on what it means to live out our faith in Christ. Mark's Gospel calls us to "Love the Lord your God with all your heart and with all your soul and with all your mind and with all your strength." (Mk 12:30) We find similar words in Matthew 22:37 Luke 10:27, Deut. 6:5

I've been told, one of the early Christian greetings was "How is your soul today?" Perhaps they did greet one this way instead of saying, "Hello" (in Greek, Hebrew or other native tongue).

Lent is the 40 day period when we prepare to celebrate Easter. We are invited through the words of the Ash Wednesday Service to enter into a "Holy Lent."

Our Ash Wednesday Liturgy marks the beginning of a 40 day walk toward Jerusalem with Christ. It is a time where we can look into the mirror and say "How is your soul today?" The things we do in the season of Lent are meant to strengthen our hearts, our minds and our souls. Lent is the time of regeneration in Christ. We will have various opportunities to reflect on our faith during Lent with the hope that each person will find something that interests them.

- Sunday evenings at 4pm we will share a Lent Study titled "Remember your Baptism."
- Tuesday at 8am we will have Morning Prayer followed by a short reflection on the Sunday evening program.
- Wednesday at 7pm we will have a quiet reflective Eucharist using Taize music. The homilies will be a series of reflections on the Lord's Prayer.
- Thursdays at 8am we will have Morning Prayer with a reflection on "The way we pray."

## 2011 Mark your Calendars

Information about our services is also on the web site:  
<http://stpaulpib.com/>

In 2011 there will be several activities at St. Paul's to connect with the local history and to invite visitors to come and see us both on Sunday and during the week. We are looking for people like you (the people who read our newsletter) to see which of these interest you – we need various kinds of assistance from leading tours to distributing information to various places.

**St. Paul's Church History Presentation** – every Tuesday, June through September, at 9:00am or by appointment. This follows our normal 8am Morning Prayer Service.

St. Paul's has held services continuously since 1864. This 30 minute presentation will share some of the unique history of the parish.

Once the labyrinth is completed, visitors will be invited to walk our labyrinth at the conclusion of the presentation.

-----  
**May 3<sup>rd</sup> Blessing of the Fleet** 11 am at Fox's dock

**May 22<sup>nd</sup>** St. Paul's will join Put-in-Bay's celebration of England's Queen Victoria with a special prayers in our worship service.

**July 24<sup>th</sup>** St. Paul's joins the PIB Christmas in July with - **Carols & Hymn Sing**. Led by a well known musician from Shenandoah National Park.

**June 19<sup>th</sup> Founder's Day Weekend:** The Sunday 10:30 am worship service will use portions of the worship service used at St. Paul's in the 1860s.

**Aug 21<sup>st</sup> Commodore Perry Birthday Weekend:** The Sunday 10:30 am worship service will use portions of the worship service used aboard the ships fighting in the War of 1812.

**Oct 2<sup>nd</sup> 10:30 am** - Bishop's visitation to St. Paul's.

**Oct 2<sup>nd</sup> at 4:00 pm** - **Blessing of the Pets** in celebration of St Francis Day.

### Thank You For Your Prayers

Lois Jellison is recovering from a broken leg in Sandusky. Barbie Barnhill is waiting for a broken toe to heal in Wilmington NC. They both say thanks for all your prayers. They will look forward to seeing you as soon as they become mobile again.

## Advisory Groups

We've formed several "advisory groups" to help coordinate the myriad activities at St. Paul's. They aren't traditional committees or commissions (yet). There are no minutes or charters. Our parish is just big enough that the vestry cannot do everything. These advisory groups will help the vestry get things done between meetings. Some will meet 2-3 times a year and some may choose to meet more often.

Anyone is welcome to attend the advisory group meetings. If you have interested in one of these areas, please let Mo. Mary or Mary Ann Meyers, our Senior Warden, know. Advisory groups are being formed in these areas:

Worship & Liturgy ✕ Children & Youth Ministries ✕ Buildings & Grounds ✕ Finance & Budget ✕ Stewardship

There will also be special event groups such as the Spaghetti Dinner, Labyrinth and Columbarium.

### Timing - Continued from page 1

to announce a potluck, people will have made other plans. We also know if we make the same announcement too many times, it is human nature to tune it out. Our newsletter seeks the perfect balance and timing for our communications. If you have questions between newsletters, you can call the parish office. The PIB Gazette publishes items we provide each month and you can always check St. Paul's web page. At St. Paul's we know the best timing for various things is tied to the rhythm of the island which is so different from other communities.

The next edition of St. Paul's Herald should be in your mail box on March 31<sup>st</sup>. If you have something to publish, please send it (preferably by e-mail) to the parish office or Mary Ann Meyers by March 18<sup>th</sup>.

## IN THE HOSPITAL

Please contact Mo. Mary if someone in your family or from our parish is hospitalized. This includes when you are away from PIB in the winter. We want to pray for all in our extended family wherever you may be. Mo. Mary will visit those who are hospitalized in the Toledo-Sandusky-Cleveland area whenever possible.

# *ST. PAUL'S, PUT-IN-BAY, ANNUAL MEETING HIGHLIGHTS*

## *REFLECTING ON 2010*

### **January 2011**

The 146<sup>th</sup> year following the organization of St. Paul's  
 Fall 1864 - Episcopal Worship began on South Bass  
 January 1865 – The first baptism in the parish record  
 October 1865 – The first baptism inside St. Paul's sanctuary

#### **SENIOR WARDEN'S HIGHLIGHTS**

Mother Mary L. Staley arrived

List of 2010 Maintenance on our historic church

St. Paul's Ministries in 2010 included

- Be the Host church for the Bishop's Bike Ride in July-fed and housed ~41 people.
- Employee Spaghetti Dinner (served 200)
- Winter Food Pantry
- Church School for children

"A wonderful thing happened on the way to 2011...this church community became an even more connected group of dedicated people with high hopes for St. Paul's ministry."

**SOUND SYSTEM** In April of 2010 St. Paul's began using our new sound system. This has added to our services and is appreciated.

#### **FROM FR WEBSTER'S MESSAGE IN THE ANNUAL REPORT**

"Joy and I appreciated the generous farewell that St. Paul's provided us in July. And I have to admit that our time with you remains a highlight in our many years together. You not only welcomed me as your "Very Part Time Interim Pastor," you welcomed Joy as a full member of your family. Your hospitality and warmth reflected the dedicated followers of Christ that you are."

#### **FINANCIAL RESOURCES AND STEWARDSHIP**

The financial picture of any parish comes from three views. We tend to look at the reports of our past income and expenditures to understand where we are. Our Stewardship Advisory Group is beginning the work to encourage us to share a portion of what God has given us and then we look to the Finance Advisory Group for their future budget recommendations to the vestry. The vestry reviewed the budget and offers it for parish approval at the Annual Meeting.

#### **2010 Financial Audit**

St. Paul's financial statements were audited by individuals recommended to us by the Diocese of Ohio. The results of this Audit gave us the assurance that our accounting practices follow the intent of the Diocesan guidelines as well as good business practices.

#### **2010 Financial highlights**

The treasurer keeps the records and ensures the bills are paid according to the direction of the Vestry and advice of the Finance Advisory Group. This report places our finances in context so the Vestry can present the budget for 2011 and describe what the future financial health looks like.

- At the end of 2010, income and expenses were higher than anticipated.
- Expenses 132% higher than budget (steeple repairs, rectory repairs and hiring a ¾ time priest)
- End year deficit came from our reserves. We received a gift from the estate of a parishioner.
- 2011 pledges before annual mtg: 27 pledges totaling \$31,674.00. Almost identical to last year.



*ST. PAUL'S, PUT-IN-BAY, ANNUAL MEETING HIGHLIGHTS  
REFLECTING ON 2010*

2011 budget overview:

- Income Estimate \$54,728.00
- Expense Estimate \$99,099.49 (aprox 10% lower than 2010)
- Total budget deficit of \$44,371.49; we anticipate a draw on the reserves in 2011 to cover the deficit.

We currently have \$150,000.00 in Endowments. These endowments shall be used as an investment and shall not be used for general operations. Earnings only from these funds shall be used for operations.

Our reserved funds consist of the following:

Accessibility Fund	\$ 11,941.16
Youth Fund	3,168.07
Labyrinth/Columbarium	41,253.00
Food Pantry	402.92
ECW	<u>2,327.28</u>
Total:	\$ 59,092.43

As of December 31, 2010, values of our investments: \$ 388,295.46

**PARISH STATISTICS**

Each year the parish is asked to report numerical information. This information by itself has limited use. There is value in taking a long view of the information. Some parishes will use it to see where we can expand our ministry to underserved groups. Over several years, the information can also become a barometer when compared to the situation in a specific community.

St. Paul's started keeping some records in 1865 but the requirements for recording and reporting did not come about until much later. Today, the way we define some of the report information is not the same as the methods and definitions used 20, 30 or 40 years ago. For this reason, spikes and drops in numbers should be reviewed in context.

In the fall of 2010 Mella Clark, the clerk of our vestry, and I set out to review our records and to publish a parish directory. The more we looked into the records, the more we realized this would not be a small task.

Part of the reason is, there is a long tradition of children and grandchildren of summer residents being baptized here, and only returning once a year on vacation (sometimes less). Over the past 50 years the way we've handled these individuals has changed yet there has not been a complete review of the past entries.

Mella's endless hours of researching entries and helping review and update the records have been invaluable. We've discovered a number of people who should be moved to an inactive status and others who are being removed as we discover they died some time in the past 5-25 years.

Once we complete the record review we will publish a St. Paul's directory which will include the people who worship here regularly throughout the year and others who are affiliated with St. Paul's each summer.

The hope is we will have a good address list of those who have been baptized here or who are connected to St. Paul's that we can use as we prepare for the 150th Anniversary of our first worship service.

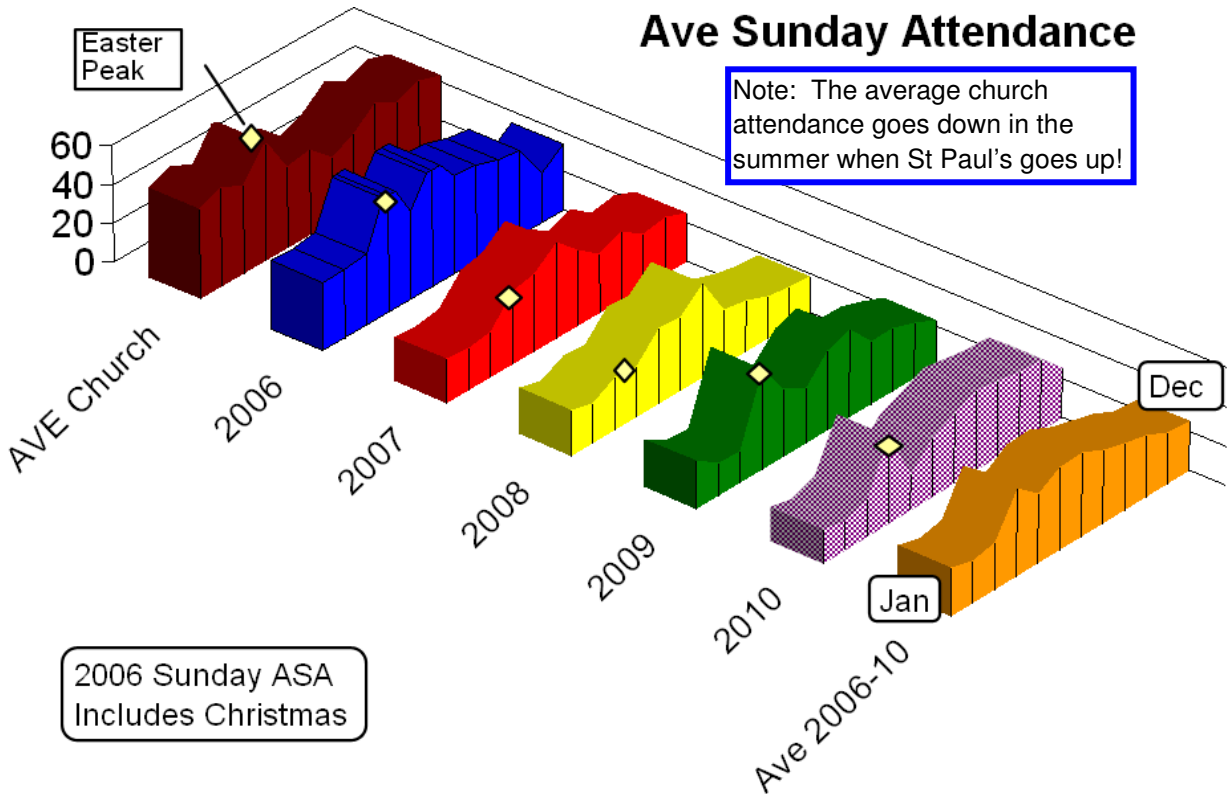
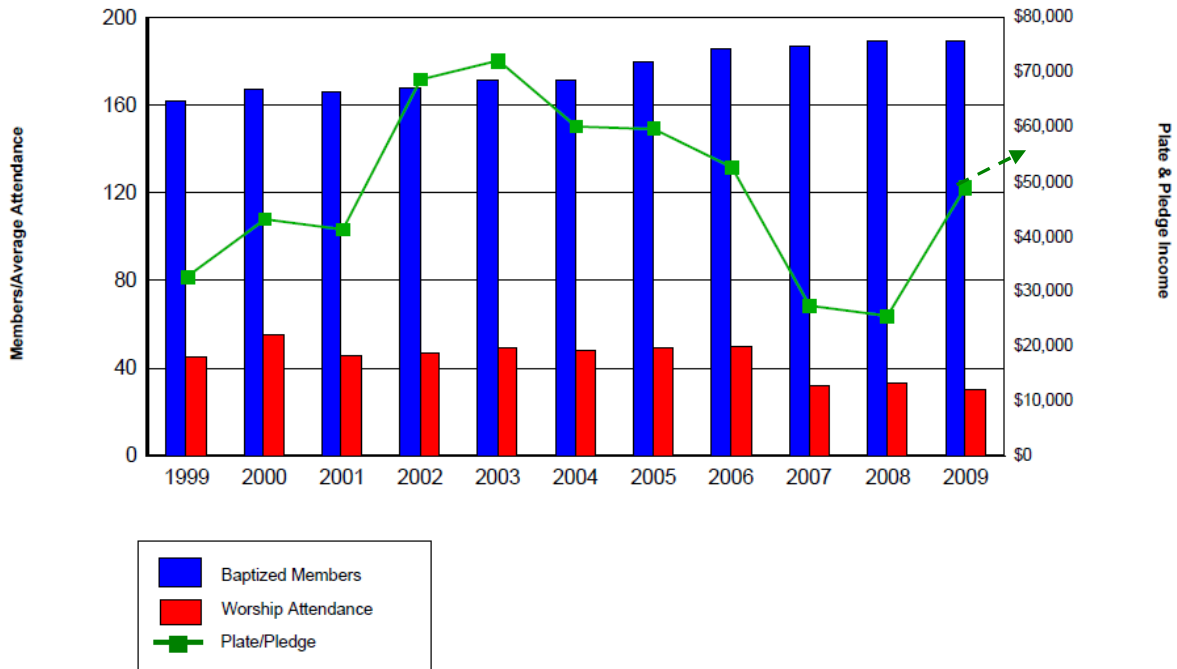
# ST. PAUL'S, PUT-IN-BAY, ANNUAL MEETING HIGHLIGHTS

## REFLECTING ON 2010

### St. Paul's attendance giving and membership (from Parochial Reports)

The chart comes from an Episcopal Church Web Site  
 (Charts available for every parish in the Episcopal Church)

**Participation & Giving Trends**  
**St Pauls Church, Put-In-Bay, OH (5668-7718)**



## The view ...

### ...from Mo. Mary's "Merry Mobile"

Timing is everything. Preparing this newsletter, it seems too early to be thinking about Lent. We still have several weeks of Epiphany left. I want to savor all of Epiphany with its themes of light breaking through the darkness before entering Lent.

Timing is everything, Easter and Lent are late this year, Epiphany is long and this is the only newsletter we will send before Lent begins. We will send another before we reach Easter! By the time the next one is printed the "Merry Mobile" may be back on the streets. For now it is waiting patiently indoors.

Since this newsletter is the only one you will receive before the beginning of Lent, I'd like to mention some of the things we will be looking forward to. The season of Lent invites us to slow down and reflect on what it means to live out our faith in Christ's redemption. Mark's Gospel calls us to "Love the Lord your God with all your heart and with all your soul and with all your mind and with all your strength." (Mk 12:30) We find similar words in Matthew 22:37, Luke 10:27, and Deut. 6:5.

We will begin Lent with the Ash Wednesday service on March 9<sup>th</sup>. Traditionally Lent is a time for taking stock. We consider how we might give up ourselves to God for his redeeming work to begin in us. Left to the devices and desires of our own hearts we are powerless to help ourselves or to heal ourselves. Only Christ can do that.

Our liturgy invites us to enter into a "Holy Lent" yet we may not appreciate what that means. Some assume the traditions of the Roman Catholic Church from earlier generations are the same ones observed by all other denominations. Growing up as an Episcopalian in a Roman Catholic neighborhood I learned the similarities and differences of our Lenten observances in after school conversations with my friends. Meanwhile, attending public school, I also came to understand the similarities and differences between my Episcopal view of Lent and my other friend's ideas drawn from their various denominations.

When we think about what we "do" in Lent we may assume it means giving up chocolate or meat. These practices only hold meaning if we begin with an understanding of how they are related to the care our souls. Whatever practice you follow, the church never intended for us to boast about it. Announcing the list of savory treats we are not eating is contradictory to the purpose of this Lenten observance.



Evelyn Underhill is recognized as one of Great Britain's outstanding religious writers. She calls Lent a good season to do spiritual stocktaking. In the disciplines of the Christian life this is called "Self-Examination." It is the first discipline mentioned in the Ash Wednesday invitation to a Holy Lent. The Ash Wednesday service begins with the words:

*"I invite you, therefore, in the name of the Church, to the observance of a holy Lent, by self-examination and repentance; by prayer, fasting, and self-denial; and by reading and meditating on God's Holy Word." (BCP, p. 265)*

Part of our understanding takes root in the baptismal promises made for us as children. At confirmation we take these promises as our own to guide us through out our lives. This year we will gather together to reflect on those promises. We have made those promises for ourselves and for many children who have been baptized here at St. Paul's.

It is Lent again. And the ashes will be smeared on our foreheads not to show others how good or how righteous we are, but to remind ourselves, that left to ourselves, we "are dust and unto dust we shall return."

Most people who attend the Ash Wednesday service find it is important for them to enter into the liturgy, year after year after year. Over the years it has become part of the very fabric of my being. With each year we reflect on another year of spiritual growth and we enter Lent again continuing to learn a little more, grow a little more and open ourselves to the forgiveness offered to us by our savior. It is only in bringing ourselves as we are in the present, rather than waiting for some ideal perfection, that we can hope for our sanctification to occur.

How is your soul today? A question we can think about in any season of the church year; Lent, Epiphany, or any other time of year. Whatever the answer, consider doing something to nourish your soul today and everyday.

In Christ's Love,

*Mary +*

**ST. PAUL'S  
Episcopal Church**

623 CATAWBA AVE  
P.O. BOX 248  
PUT-IN-BAY, OHIO  
43456

Phone (419) 285-5981

Office E-Mail:  
St.Paulspib@cros.net

We're on the Web!

See us at:  
[www.stpaulputinbay.org](http://www.stpaulputinbay.org)

And we are on Facebook

## 2 Cents a Meal

St. Paul's has a long tradition of contributing to this program. This program is designed to remind us of the poor and needy at mealtimes. It encourages individuals and families to engage in a daily devotional exercise of collecting 2 pennies per person per meal in a container on the table where you eat your meals.

Once a month, the container at home is emptied and brought to the church.

On the last Sunday of each month, the 2 cents a meal collection bowl will be near the entrance to the church for your contributions. It will really help us if you

convert your pennies to larger coins or bills.

The ushers will bring the container forward with the other offerings on the last Sunday.

The 2 cents a meal program is another way of supporting the Millennium Development Goals.

## St. Paul's Office Hours

### February and March

Tues, Wed and Thursday 8:30am to 12pm  
Tues, Wed and Friday 1:30pm – 3:30pm

Drop-ins are always welcome and encouraged but it never hurts to make an appointment by calling or e-mailing the parish office.



ST. PAUL'S EPISCOPAL CHURCH  
P.O. BOX 248  
PUT-IN-BAY, OHIO 43456  
*Address correction requested*

TO: ST. PAUL'S FRIENDS,  
MEMBERS AND AFFILIATES  
  
ADDRESS LABEL HERE